

GPAEE Newsletter



Greater Philadelphia Area Chapter of the Association of Energy Engineers

"Fostering action through education, innovation & networking to promote the priorities of Philadelphia-area Energy Professionals"

March 2011

Table of Contents:

Focus On: Upcoming PA Energy Legislation You Should Know About	1&3
Calendar of GPAEE Events	2
Next Event: March 31st: PA Energy Legislation	2
Pictures from February Event	3
CWEEL Announcement	4
Welcome New and Renewing Members	4
Thank You Corporate Members	4
April Event Preview	5
Upcoming Area Energy Activities	6
Energy News	7
Globalcon Update	8
Board List	8-9
Support GPAEE!	9
GPAEE Cares	10
Energy Job Board	10
Advertisements	11-12
AEE National	13
Newsletter Contact Info	13
Editor's Corner	13

Greater Philadelphia Chapter



AEE
The Association
of Energy Engineers
www.gpae.org

Free Expo 3/30 & 3/31!
Click Image Below



Focus On: Upcoming Pennsylvania Energy Legislation You Should Know About

Meeting Background

Please join us for Lunch during Globalcon for an interesting and up to date briefing on current and upcoming energy-related Pennsylvania legislation that you should know about. PA State Representative Chris Ross (R - Chester) has been involved in many energy related bills and has a great understanding of the issues. If you are doing business in Pennsylvania, you don't want to miss his talk.

About Representative Chris Ross

Representative Ross' legislative efforts have focused on protecting Pennsylvania's natural resources and making government more accessible and accountable.

This session, he serves as Majority Chairman of the Urban Affairs Committee and is a member of the Environmental Resources and Energy Committee.

Ross serves on the Council of State Governments, National Executive Committee, Suggested State Legislation Committee and the Energy & Environment Task Force. Also, he serves on the Council of State Governments, Eastern Regional Executive Committee, Energy and Environment Committee. In 2010 he was appointed to the U.S. Environmental Protection Agency, Local Government Advisory Committee.

In 2004, Ross spearheaded legislation that was signed into law creating the Alternative Energy Act. The act mandates that 18 percent of energy sold by electric energy suppliers in Pennsylvania will be from alternative energy sources such as wind power, solar power, and cogeneration. The Alternative Energy Act was designed to gradually adapt the new sources into the current electric infrastructure.

For more about Rep. Ross, go to his website: <http://www.repross.com/>

* **Note:** *Focus On* is continued on Page 3 *

GPAEE Calendar of Events: Sept. '10 – June '11

Page 2



Month	Event
September 21, 2010	Retro Commissioning & Continuous Energy Management and the Phillies Game!
October 26, 2010	Energy Sourcing Implementation and Strategies
November 19, 2010	The Navy Yard Today *(see below)
December 2, 2010	GPAEE Holiday Party
January 20, 2011	Energy Master Planning
February 17, 2011	Social Media - Connecting with the Energy Community
Early March	Council on Women in Energy & Environment Leadership - Network Reception
March 31, 2011	Globalcon: Upcoming PA Energy Legislation You Should Know About (See Below)
April 28, 2011	Financing Renewable Projects
May 19, 2011	Energy Case Studies & Project Financing
June 23, 2011	GPAEE Annual Golf Outing

Thursday, March 31st is Next GPAEE Event: **Globalcon at the Pennsylvania Convention Center: Upcoming PA Energy Legislation You Should Know About**

Date: Thursday, March 31, 2011

Time:

- 11:30 AM - 12:00 PM Registration / Networking
- 12:00 PM - 1:30 PM Presentation

Location: Pennsylvania Convention Center
 1101 Arch St - Room 103C
 Philadelphia, PA 19106

Directions: <http://www.paconvention.com/home2/attendees/directions/>

Cost: Free for Globalcon Conference Attendees
 \$20 for Non Conference Attendees
 \$5.00 for Students and Unemployed - Contact Jim Harven

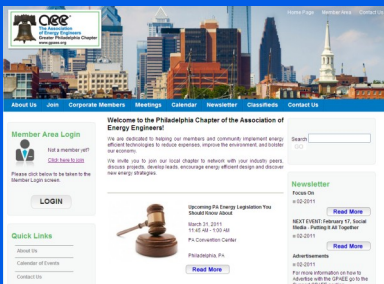
Registration:

- 1) Go To: www.aeccenter.org/GCChapter,
- 2) Click the provided link to register for the event.
- 3) Create a User Name and Password
- 4) Select the AEE Greater Philadelphia Chapter Luncheon
- 5) Make payments as necessary

Add'l Contact Info Jim Harven James.Harven@constellation.com

More Information: For more Event information, please click on the *Event Flyer* icon (located on left, above the Registration icon)

Click Below For
 Additional Registration Info!



Focus On: Upcoming Pennsylvania Energy Legislation You Should Know About (cont'd from page 1)

Meeting Registration Information



All registrations for this meeting, with the exception of Student and Unemployed (please sign up through the below link for this option) registration please sign up for the meeting through the Association of Energy Engineers Official Globalcon website at: www.globalconevent.com. Create a user name and login if you don't already have one. Sign in and follow the registration guidelines. If you are attending the conference, entrance to this meeting is included with your registration. If you would like to attend the meeting without signing up for the full conference, please register for the Free Expo. Select attendance for the AEE Greater Philadelphia Chapter Luncheon. The cost for the meeting is \$20. Walk ins welcome.

Pictures from our February Event: Social Networking



Council on Women in Energy and Environmental Leadership

Council on Women in Energy and Environmental Leadership (CWEEL) a division of AEE, is organized to support the development of a prominent voice for women in the energy and environmental industry. Its goal is to provide representation of women in industry-related policy issues such as our present and future sources of energy and the impact of energy on the environment. Further, CWEEL endeavors to secure a future in energy-related technical fields for women by supporting training, education, and mentoring of young girls and women and to contribute to the advancement of women in leadership positions throughout the industry. The CWEEL establishes a forum for women to promote policy in the energy industry.

LEARN MORE ABOUT CWEEL AT TWO EVENTS AT GLOBALCON

Energy Policy: Opportunities, Challenges

Pennsylvania Convention Center

A program for women professionals and women-owned companies

Thursday, March 31st

7:30 a.m. to 9:00 a.m.

Free Breakfast for all Globalcon 2011 attendees

Networking Reception

Pennsylvania Convention Center

Thursday, March 31st

4:00 p.m. to 6:00 p.m.

FREE to CWEEL Members

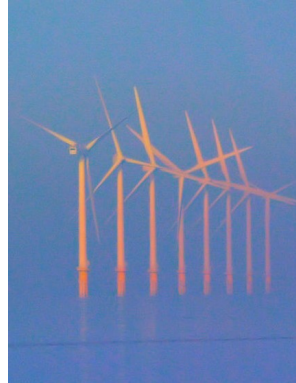
\$40 Non-Members

Thank You Corporate Members!

Altran Solutions Corporation
Commercial Utility Consultants
Constellation New Energy
Ecolibrium Group LLC.
Elliot Lewis Corporation
EMon, LLC
Ewing Cole
Hess Corporation
ICF International

Klenzoid Inc.
Noresco
PECO
PGW
Reliant Energy
South Jersey Energy Solutions
Tozour Energy Systems
Trigen, A Veolia Energy Company
UGI Energy Services

GPAEE Event Preview: April '11



Save the Date!
APRIL 28, 2011
FINANCING RENEWABLE
PROJECTS
Lunch Meeting at McCall Field
Upper Darby, PA

Upcoming Area Energy Activities

Function	Date	Location	More Info
<i>PA Energy Services Coalition</i>	March 10, 2011 8:30am - 10:30am	Radisson Hotel Valley Forge King of Prussia, PA	www.energyservicescoalition.org
<i>Future of Sustainable Healthcare</i>	March 15, 2011	Thomas Jefferson University Hospital	http://www.dvgbc.org/future-of-sustainable-healthcare
<i>Energy Audits: Your Buildings Return on Investments</i>	March 14, 2011 6:00pm - 8:30pm	1900 Ben Franklin Parkway Philadelphia, PA	http://condoenergy-audits.eventbrite.com/
<i>LaSalle University's Sustainability Symposium</i>	March 19, 2011 10:00am - 2:30pm	LaSalle Union and Holroyd Science Center 1900 W. Olney Ave. Philadelphia, PA	http://sustainsymposiumla-salle.eventbrite.com/



Marcellus Shale production database July-Dec 2010

The Department of Environmental Protection on Wednesday released Marcellus Shale production and waste reports for the past six months of 2010. As always, you can scan the databases yourself (production below, waste here), but here are some regional stats: In southwestern Pennsylvania, Marcellus wells yielded more than 82 billion cubic feet of gas, almost a third of the state's total. ([more](#))



Fitch sees Rust Belt states facing most coal-fired plant retirements

Fitch Ratings said smaller coal-fired power plants in five contiguous Rust Belt states are most likely to face retirement under stricter pending environmental regulation.

In a Feb. 28 special report titled "Time to Retire? U.S. Coal Plants in Environmental Crosshairs," Fitch said about 51 GW of coal capacity in 37 states with a weighted-average age of about 50 years is most at risk for retirement. About one-third of that capacity is in Michigan, Illinois, Indiana, Ohio and Pennsylvania. ([more](#))

Congress Backs Energy Agency

Two years after it was created the Advanced Research Projects Agency for Energy (ARPA-E) is receiving support within Congress as a way to address concerns about energy security, the economy, and national security. While Congress contemplates major cuts in many programs, Republicans and Democrats in the House have voted to increase funding for the agency above current levels. The increase is only a 10th of what President Obama asked for in his 2012 budget for ARPA-E, but it is a marked exception to the spending reductions in the rest of the bill.

ARPA-E is meant to fund risky energy-research projects—ones that are unlikely to get initial funding any other way but have the potential to have a big impact. For example, they might seek to make solar power as cheap as fossil-fuel-based power or to give electric vehicles a range and a cost comparable to those of gasoline-powered cars. ([more](#))

U.S. solar growth hinges on big cash infusions

A rebounding economy and growing pool of deep-pocketed investors could drive the U.S. solar industry to double its installations for a second year, but the capital costs for the clean energy systems remain huge.

The U.S. photovoltaic industry is coming off its best-ever year, with about 1 gigawatt in new panels installed. That is about equal to the capacity of a nuclear power reactor, or enough to power about 1 million homes, and many solar companies expect new installations to reach 2 GW this year. ([more](#))

** **[Editor's Note:** Please let us know if you come across any newsworthy local Energy stories, announcements or events by [clicking here](#). Thanks] **



Philadelphia PA March 30 – 31

Decision makers from business, industry and government must now seek integrated energy solutions — solutions which assure both a secure and affordable power supply, and effective management of both energy and overall operational costs. **Globalcon 2011**, presented by the Association of Energy Engineers, is designed specifically to facilitate those who need to get up to speed on the latest developments in the energy field, explore promising new technologies, compare energy supply options, and learn about innovative and cost-conscious project implementation strategies.

The multi-track conference covers a variety of topics, and gives you the opportunity to hear first-hand from some of the major players in the energy field. The Globalcon Expo will emphasize four critical areas of leading edge technology and related services:

- **HVAC and Smart Building Systems**
- **Renewable & Alternative Energy / Onsite Generation**
- **Lighting Efficiency**
- **Plant and Facilities Management**

For More Information on the Conference visit www.globalconevent.com

GPAEE Chapter Board Officers & Board At-Large

<u>Board Position</u>	<u>Officer Name</u>	<u>Org.</u>
President	Jim Harven	Constellation Energy
VP & Membership	Ken Curry	Cardone Industries
Treasurer	Mike Sanders	Thornfield
Secretary	Daniel Tavani	MACTEC Engineering & Consulting
Events	Christine Stearns	Tozour Trane
Marketing	Maryanne Campbell	Philadelphia Gas Works
Pres. Emeritus	Randy Haines	TJU
Newsletter Editor	Caroline McCallum	Concord Engineering Group
Board At-Large	Jim Clark	Clark Energy
Board At-Large	Lou Nazirides	Tozour Energy Services
Board At-Large	Steve Goldberg	PECO
Board At-Large	Steven Siddal	Fluidics



Support GPAEE!

GPAEE: Keeping Philly's Energy Community informed. GPAEE has served the Philadelphia-area energy community for 30 years. During that time, GPAEE has never veered from its goal of keeping building and facility managers updated regarding the latest energy issues & innovations. Below are just some of the energy topics covered over the last few years at GPAEE's monthly informational events:



- Co-Generation
- LEED Buildings
- Lighting Technology
- Solar Energy
- Trade Shows
- Bio-Mass
- Wind Energy
- Energy Legislation
- EPA & DOE Programs
- Utility Company Issues
- Energy Service Companies Programs
- Demand Response Programs

GPAEE wants your Support. GPAEE is an all-volunteer non-profit organization. Accordingly, we rely on members & sponsors to underwrite our efforts. Therefore, in order to continue to provide the same high-quality energy education expected of us, GPAEE is seeking your Corporate support.

Corporate Support Options. Each month, GPAEE's award-winning Newsletter is read by over 500 energy industry professionals — area engineers, facility & building managers, contractors and vendors. In addition, our monthly Events are attended by up to 100 energy professionals. In turn, your company can reach our professional energy members & audience via several different Corporate Support options:

<u>Corporate Support Option</u>	<u>Corporate Support Option includes</u>		
<i>Corporate Membership</i>	<ul style="list-style-type: none"> • 5 x Individual Annual Memberships * <li style="padding-left: 20px;">* (a \$175 value) • Cost = \$150 • Additional Individual Memberships = \$30 each 		
<i>Newsletter Advertisement</i>	<i>Ad Size</i>	<i>Cost per Issue</i>	<i>Annual Cost</i>
	1/8 Page	\$20	\$100
	1/4 Page	\$50	\$200
	1/2 Page	\$100	\$400
	Full Page	\$200	\$800
<i>Sponsor Monthly Event</i>	<ul style="list-style-type: none"> • Includes Newsletter Announcement • Full Page Ad in one Newsletter • Corporate Profile in Meeting Announcement • Table Top @ sponsoring Event • 5 minute Presentation @ Event • Cost = \$300 		

For information on becoming a Corporate Member, Advertising in our Newsletter, or becoming an Event Sponsor, please contact **Maryanne Campbell** at maryanne.campbell@pgworks.com or 215-684-6724.

GPAEE CARES!

Greater Philadelphia AEE Board Employment Initiative

The economy is tough. Many of our business associates are facing hard times. Even if the recession is over as many economists claim, unemployment is expected to increase in the next few years. Ironically, jobs are increasing in some energy fields. We invite our members and Sponsor companies to join the GPAEE Board in our Employment Initiative.

To help our fellow energy professionals, the GPAEE has initiated the following measures for unemployed local energy professionals:

1. Local unemployed energy professionals can pay a reduced fee for most monthly meetings. When registering for meetings, register under the student and unemployed rate of \$5 for the specified meetings.
2. Unemployed members can post a free Position Wanted ad for 3 months in our newsletter which currently reaches over 600 people.
3. Free Job Ad on our newsletter Energy Job Board for GPAEE Sponsor companies and employers. Recruiters are invited to post jobs for the normal advertisement fee.
4. Companies with openings are invited to announce them at our monthly membership meetings. One of our local members landed a job with one of our Sponsor companies as a result of an announcement made at a recent meeting.

National AEE has given a limited number of coupons for a half price national membership. This discount is for new members only. This discount is for employed as well as unemployed members. Ask for the coupon at the registration desk at our monthly meeting. Also, you can become a local GPAEE member without being a national AEE member.

The GPAEE Board reserves the right to limit the number of discounted attendees at each meeting. The meeting discounts and other measures are for unemployed energy professionals. The definition of unemployed does not include retired or self employed members.

Jim Clark will be the main point contact for this effort. Employers and employees can contact Jim at (610) 325-9229.



GPAEE CARES!
Unemployed &
Students \$5

Let us know how we can help you. Network at our meetings and connect with your local energy community.

ENERGY JOB BOARD

Ads for seeking employment are requested by our newsletter editor by the 15th of the month preceding the publication month. Please visit the Classifieds tab on our website for additional job information: www.gpae.org. Please provide a URL link or contact info for more information. Ads are free with the following exception: Ads solicited by professional employment agencies or consultants will be treated as normal advertisements. Send information to our newsletter editor, Caroline McCallum cmccallum@ceg-inc.net.

Alina Mackenthun

My name is Alina Mackenthun and I am studying "Energy, Business and Finance" at the Pennsylvania State University. I am currently looking for summer internship opportunities for 2011 in the energy field. I am interested in anything from green building techniques and cost/benefit analysis to energy management/efficiency and finance.

For more information please contact:

[Alina Mackenthun](mailto:Alina.Mackenthun@psu.edu)

484-340-9499

anm5175@psu.edu

Pauls Run Retirement Community Maintenance Supervisor

Responsibilities:

- Schedules maintenance work and repairs on a priority basis in cooperation with all departments. Assure all work orders are handled in a timely manner and that follow-up is completed.

- Solves work problems, job assignments, and meets daily repair schedules in coordination with the Facilities Director.

- Coordinates apartment renovations for new residents moving in

- Complete random quality control inspections of all employees to assure jobs are being completed correctly and to the customer's satisfaction. Inspections are to be completed monthly with a report to the Facilities Director.

For more information please contact:

Jane Paxson (215)-934-3002 or janep@paulsrun.org

PT Instructor Needed to Teach Green O&M to Philadelphia School Operators

[SEIU 32BJ](#) Thomas Shortman Training Fund is seeking a PT instructor to teach a 16 hour class entitled "GPRO O&M" to School Operators. The class will be delivered in 4 sessions / 4 hours each session.

The training will take place on Saturdays.

PLEASE SEND A RESUME TO:

James Barry

Manager of Program Development

Building Service 32BJ Thomas Shortman Training Program

101 Avenue of the Americas

New York, NY 10013


Clean Markets Marketing Manager

Clean Markets, a growing market development firm focused on the clean energy sector, is seeking a Marketing and Outreach Manager to help government, business and institutional electric customers save energy and money by taking advantage of existing financial incentives. As part of a larger team that is providing marketing and outreach support for energy efficiency programs, Clean Markets is seeking an experienced energy professional with demonstrated capability in consultative sales and marketing. The successful candidate will be responsible for marketing and outreach activities directed at contractors, equipment manufacturers, engineers, architects and others who provide energy efficiency equipment or services to government, institutions and businesses throughout central and eastern Pennsylvania.

Interested applicants should send cover letter and resume to info@cleanmarketswork.com

Advertisements


For more information on how to Advertise with the GPAEE please see page 9



It's about the solution.
Call PGW first.

Improve your bottom line by
meeting your customer's needs.

Major Accounts: (215) 684-6771
Residential Development: (215) 684-6701



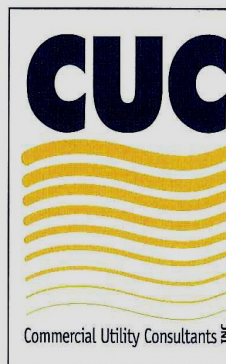
PGW
Solutions. Performance. Service.

Falvey Energy Engineering, P.C.

Terence P. Falvey, P.E.
President

142 Decatur Road
Havertown, PA 19083-1106

610.449.4988
Fax 610.449.9779
fenergy1@verizon.net



Specializing in Utility Cost Savings

JOHN J. MCGILLIAN
Regional Representative

1556 McDaniel Drive
West Chester, PA 19380
610-431-4400, Ext. 112
484-832-3229 CELL
866-699-2717 FAX
E-mail: john@commercialutility.com
Web: www.commercialutility.com

Advertisements

For more information on how to Advertise with the GPAEE please see page 9



Roy Givler, CEM
Account Executive
CenterPoint Energy Services, Inc.

325 Laudermilch Rd., Suite. 202
Hershey, PA 17033
717 520 3670
Fax: 717 370 5493
Cellular: 717 599 6614
Toll Free: 877 666 3670
roy.givler@
CenterPointEnergy.com

Natural Gas Supply & Electricity Procurement

About AEE National

The Association of Energy Engineers (AEE) is a nonprofit professional society of 11,000 members in 78 countries. The mission of AEE is “to promote the scientific and educational interests of those engaged in the energy industry and *to foster action* for Sustainable Development.”

AEE offers a full array of informational outreach programs including seminars, conferences, journals, books, and certification programs.

AEE's network of 67 local chapters meets regularly to discuss regional issues. AEE's roster of corporate members is a veritable “who's who” from the commercial, industrial, institutional, governmental, energy services, and utility sectors.

The *AEE Energy Insight* is a high-quality online newsletter that focuses on the accomplishment of the Association and its members. AEE also publishes three technical journals: *Energy Engineering*, *Strategic Planning for Energy & the Environment*, and *Cogeneration & Distributed Generation Journal*. These publications are complimentary to all AEE members.

To become an AEE National Member, please go to <http://www.aeecenter.org/membership/>.



Newsletter Comments, Opinions, Ideas

If you would like to comment on, have an opinion/idea for, or contribute a news item to the GPAEE Newsletter, then please [click here](#).

To Receive free GPAEE Newsletter

If you do not currently receive our free monthly GPAEE Newsletter and would like to do so, then please [click](#)

Forward Newsletter to a friend

If you would like to forward this Newsletter to a friend, then please [click here](#).

From The Editor

We gave the online newsletter a 4 month trial run, but just didn't feel it stacked up to the “award winning” version you are accessing here. So we have converted back to the printer and layout friendly former version, which we are using to incorporate elements into our website. In the end we hope both communication tools help keep you connected to what's going on with your local GPAEE chapter.